



**MGM security group**

*Burglary Safe manufacturers*

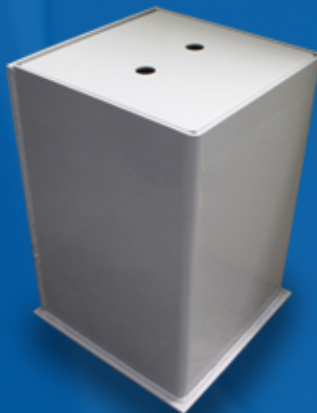
## *Floor safe*



### DOOR CONSTRUCTION :

Made of 2" laminated steel and very high tensile steel.

The ½" thick high tensile steel that we are using in the construction of our door and door frame is up to 4 times more resistant than conventional steel.



### STANDARD MODELS:

9250 - 12" W x 12" W x 10" D, weight 130 lbs

9251 - 12" W x 12" W x 13" D, weight 140 lbs

9255 - 12" W x 12" W x 17" D, weight 140 lbs

9257 - 12" W x 12" W x 13" D, weight 140 lbs, with deposit slot.

9258 - 12" W x 12" W x 17" D, weight 140 lbs, with deposit slot.

Toll free 1-866-327-4688 - Tel 905-435-4788 - Fax 905-435-1019

**MGM Security Group inc**

555 Wentworth St E. unit 3

Oshawa, Ontario

L1H 3V8

Web: [www.mgmsecuritygroup.com](http://www.mgmsecuritygroup.com)

[info@mgmsecuritygroup.com](mailto:info@mgmsecuritygroup.com)



*Proudly made in*

**Canada**

*Since 1981*